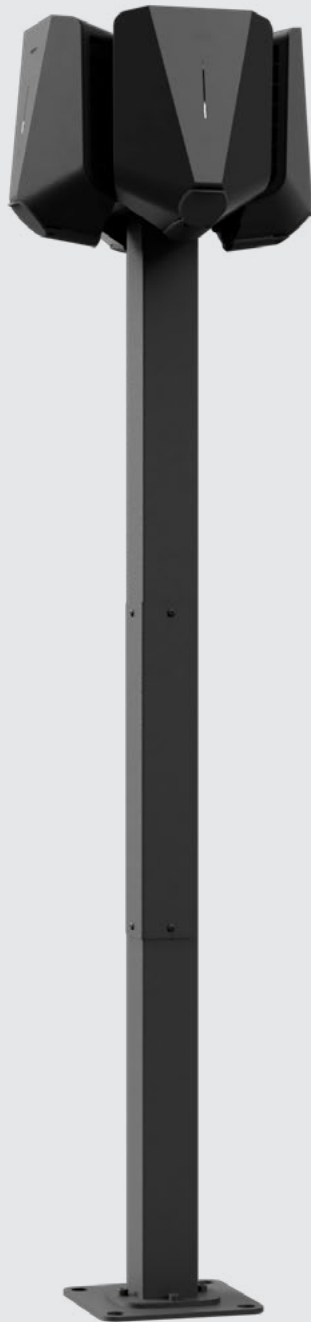


# Easee Base

Easee Base is a robust and weatherproof post that gives you more freedom to install the Charging Robot where it suits you best. It has three configurations that support single, dual or quad charger setups, getting the maximum out of the installation. Thanks to its Power rail connection box, it connects different bases in series, while converging all Charging Robots terminations in the same rail.



# Why choose Easee Base?

## Benefits

- Up to four Easee Charging Robots can be installed on the same base.
- Easy to connect each base in series with the supplied Power rail connection box.
- Made of steel, with a strong scratch resistant powder coating, ensuring a long lasting durability.
- Integrated cable hooks that allow the charging cable to be permanently connected<sup>1</sup>
- Adapter plate that allows for a 45 degree installation angle.
- Designed in Norway

<sup>1</sup>Only available for 1-way and 2-way setups. The charging cable can be permanently locked in the Charging Robot.



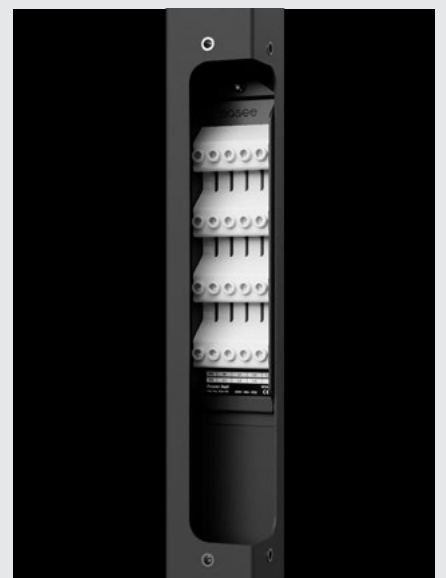
---

## Power rail

The Power rail is a connection box that allows multiple charging posts to be connected in series.

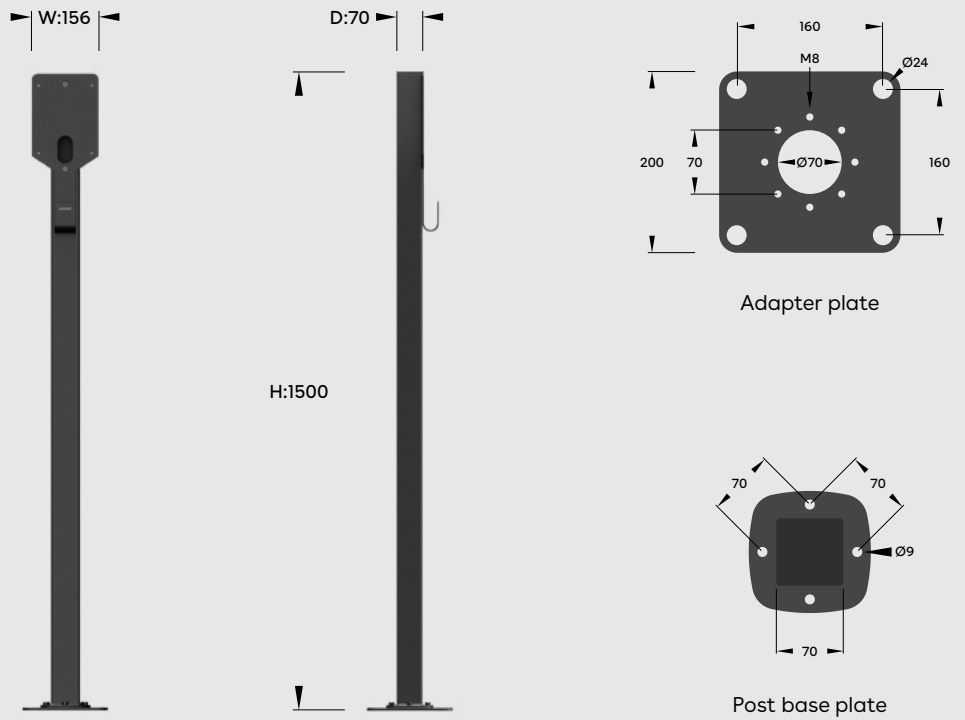
We recommend using the two upper terminal sets for the charger cables. For a single charger, only one set of terminals is used, for two chargers both sets of terminals are used and for four chargers two wires have to share each terminal in both sets.

The two lower set of terminals is used for power in and out.



# Specifications

Measurement  
in mm



## Technical

### General

Dimension (mm): H: 1500 x W: 156 x D: 70  
Weight: 10-11 kg  
Material: Stainless steel  
Finish: Powder coating  
Colour: Black  
IP degree: IP44

### Features

Adapter plate for cc 160mm<sup>2</sup> foundation.  
45 degree rotation intervals (using the adapter plate).  
Screws and nuts included.

### Electrical connection

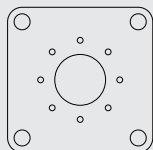
Connection via Power rail.  
Possibility of serial connection of posts.

### Cable size

In and out of the post: Max 25mm<sup>2</sup>  
Up to the Charging Robots : 6mm<sup>2</sup>

---

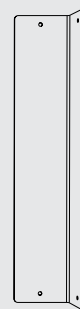
**Common parts**



Adapter plate



Power rail + ground connection plate



Side panel

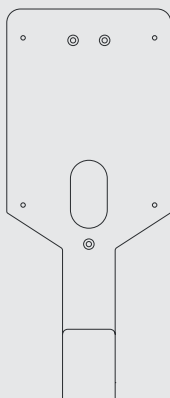


Column

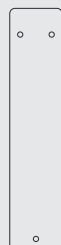
---

**1-way**  
Part no. 90301

**2-way**  
Part no. 90302



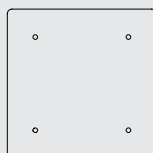
Mounting plate



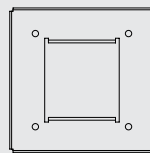
Blind cover

---

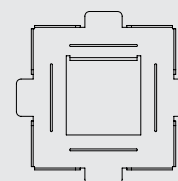
**4-way**  
Part no. 90303



Top plate



Top frame



Bottom frame



Easee AS  
Professor Olav Hanssens vei 7A,  
N-4021 Stavanger  
Org.nr: 920 292 046

Easee is distributed and maintained by a  
network of qualified partners and resellers.  
Find more information and your local  
partner at: